

# Industrial Sole Cleaning Machines



- Sole cleaning machine **DRY 400** (dry)
- Sole cleaning machine **DRY 450** (dry with suction)
- Sole cleaning machine **WET 500** (wet)

## Operating instructions

State: 2011/04

### **Power supply:**

All machines will be delivered „ready for use“ with a standardized power connector. Please make sure that the power specification on the rating plate is consistent with your actual power supply (110 volt or 230 volt).

### **Installation and putting into operation:**

The location needs to be roofed over and frost-proof in order to protect the machine and its electricity. For a secure stand the ground should be plane; rubber stripes may be used for levelling. After removal of packaging and protection provide for the aforementioned placement as well as power supply and the **sole cleaning machine** will be ready for use.

**Sole cleaning machine DRY 450** should be connected to the industrial vacuum cleaner which is available optionally. To do so, attach suction hose to the **DRY 450** and put the power cord of the **DRY 450** in the power supply of the industrial vacuum cleaner. The cleaner itself will have to be connected to the mains and provides power to the **DRY 450** automatically.

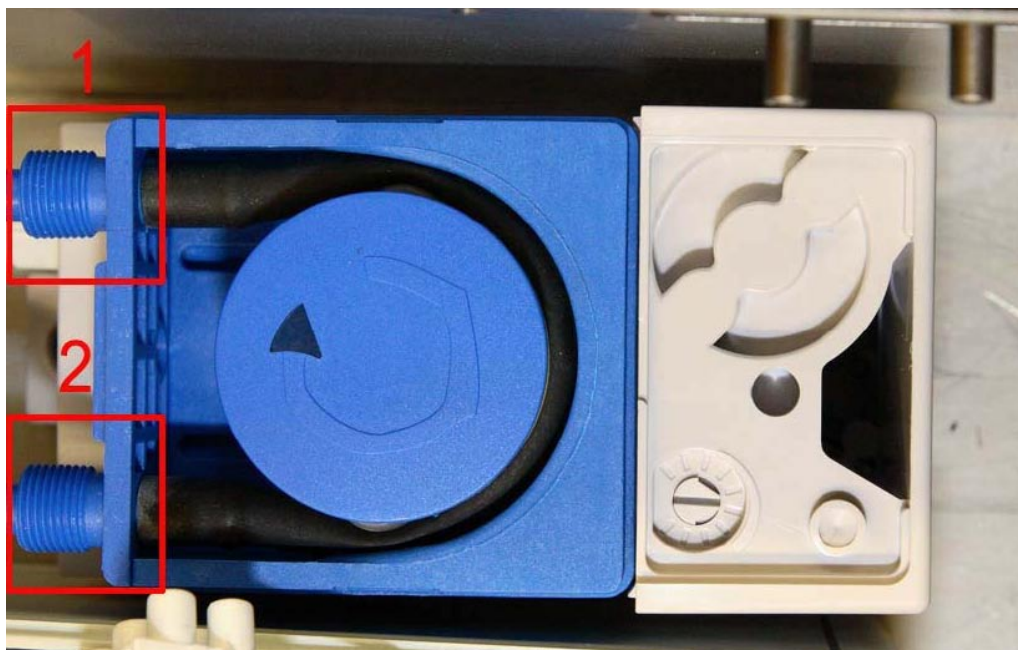
For **sole cleaning machine WET 500** please screw the drip-off grate to the main cleaning device and attach an 1/2" water supply to the adapter (1 in picture 1) which leads to the magnetic valve:



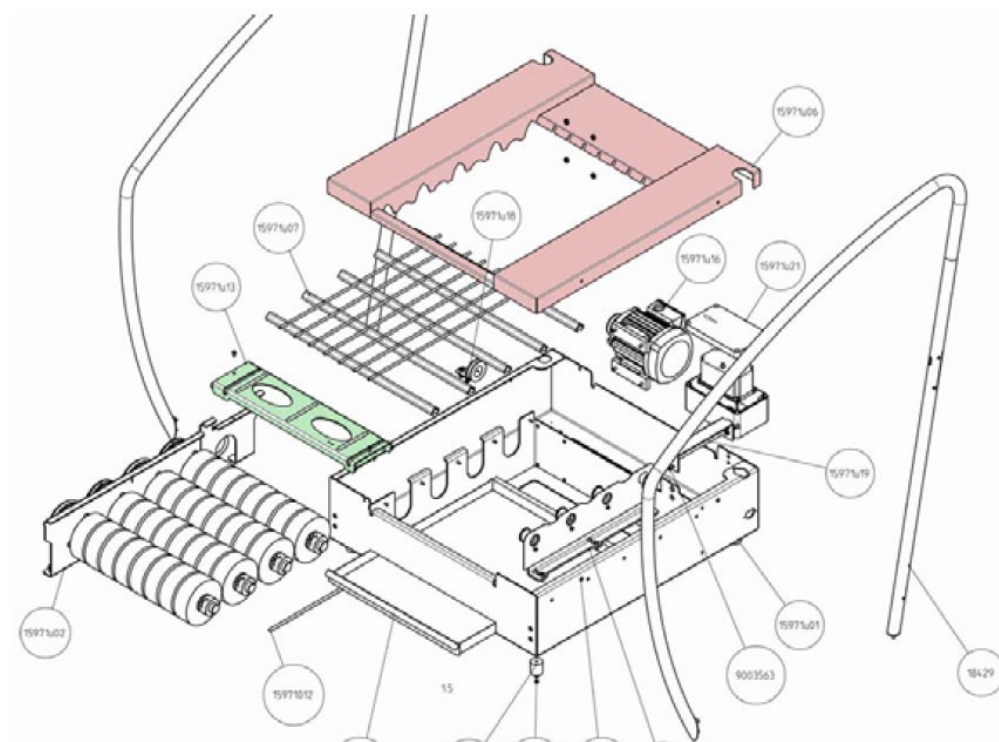
Picture 1

A pressure of 3 to 5 bar can be applied to the water supply. The freshwater discharge can be regulated by means of the dial on the magnetic valve (2 in picture 1).

Furthermore, a cleaning medium can be fed additionally with the 6 mm Ø hose (1 in picture 2 – 2 feeds the cleaning medium to the brushes inside the machine). The throughput of this additional cleaning medium can be adjusted as well.

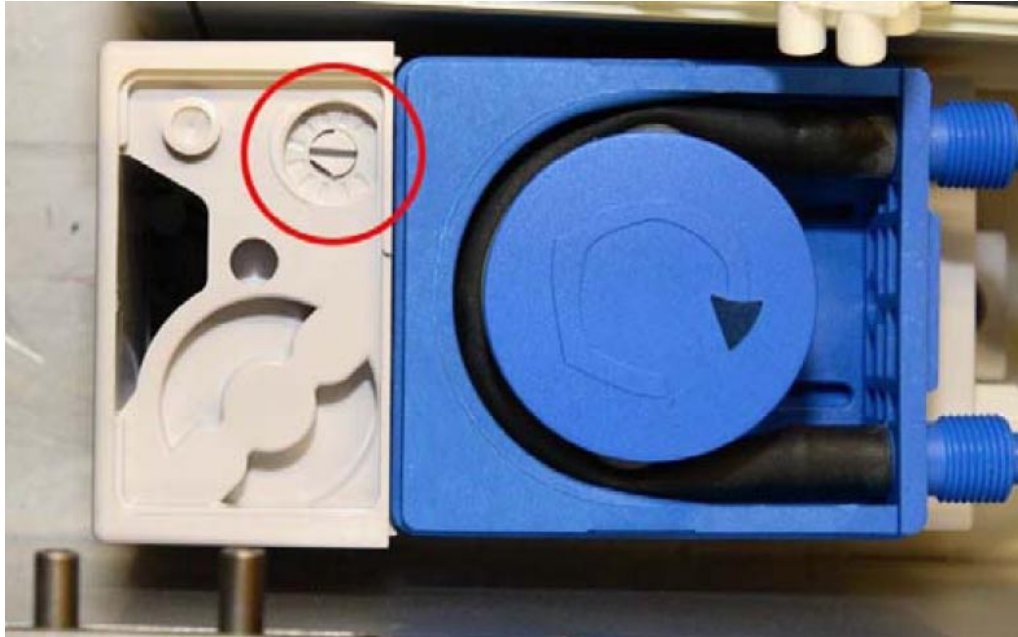


Picture 2



Picture 3

Having removed the steel cover (red in picture 3), the stabilizer bridge (green in picture 3) and the protective cap of the feeding pump the feeding amount of the pump can be adjusted from 0,15 bis 4,5 l/h with the regulator marked in picture 4.



Picture 4

Make sure that the waste water hose (picture 5 shows stopcock and drain) has a downward gradient and leads to a sewer oder sump for further disposal.



Picture 5

### ***Sole cleaning:***

The sole cleaning machines start automatically by means of an optical sensor, which is located in the handrail (see picture 6).



Picture 6

The **DRY 450** automatically starts the suction and filter mechanism.

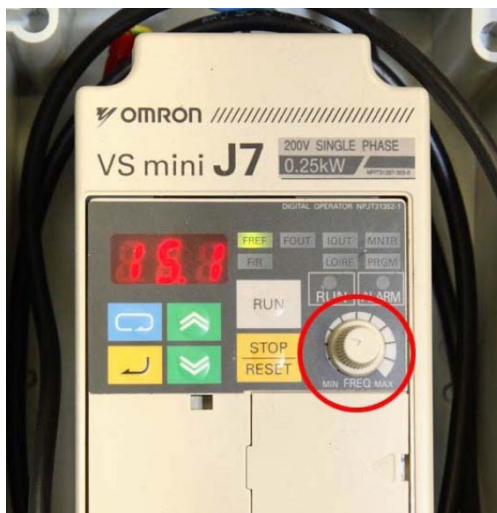
When the sole cleaning machine **WET 500** starts, its magnetic valve automatically provides water feed and the dosing pump adds optional cleaning medium to the brushes at the same time. Abundant and dirty liquid is drained away from the sink via spillover towards the sewage hose.

Moving shoes and soles slightly on the brushes can improve the cleansing process. As soon as a user leaves the cleaning area on the „white side“ of the machine all functions stop and the devices runs out automatically.

### ***Adjustments:***

Speed of rotation of the brushes can be adjusted with the frequency inverter (c.f. marker in picture 7).

Factory defaults, however, are set to provide an optimum and are best left untouched.



Picture 7

### ***Cleaning the devices:***

Unplug machines from main power supply and only clean it when it has stopped completely! Cleaning intervals depend on degree of utilization. When soiled heavily clean the device on the inside as well as outsides.



**DRY 400** has a drawer underneath its brushes which should be cleaned regularly – cf. picture 8.



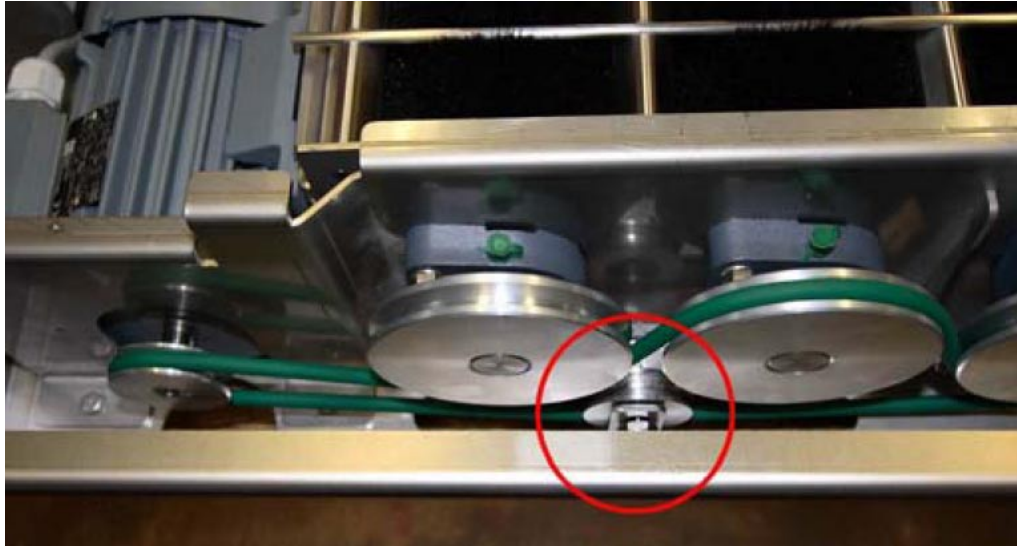
Picture 8

The industrial vacuum cleaner for the **DRY 450** has a filter which should be cleaned or exchanged periodically. Chapter 3 of the vacuum cleaner manual provides a detailed description.

The entire liquid of **WET 500** should be cleared via stopcock (c.f. picture 5) regularly. Afterwards close stopcock again and fill up freshwater and cleaning medium by activating the machine for as long as it takes to fill the bin up to the overflow.

### ***Maintenance and service works:***

Maintenance repairs dealing with electrical parts may only be executed by a service operator or skilled staff. Unplug machine from power each time maintenance works takes place. Check power cords and supply once a week and have it replaced/repaired if necessary. Bearings should be checked for ease of movement and connections of the sole cleaning machine WET 500 should be checked for liquid tightness. The strain of the driving-belt should be checked once a month to prevent belt slip. By means of the clamping device (marked in picture 9) the belt can be tightened.



Picture 9

### ***Exchanging belts:***

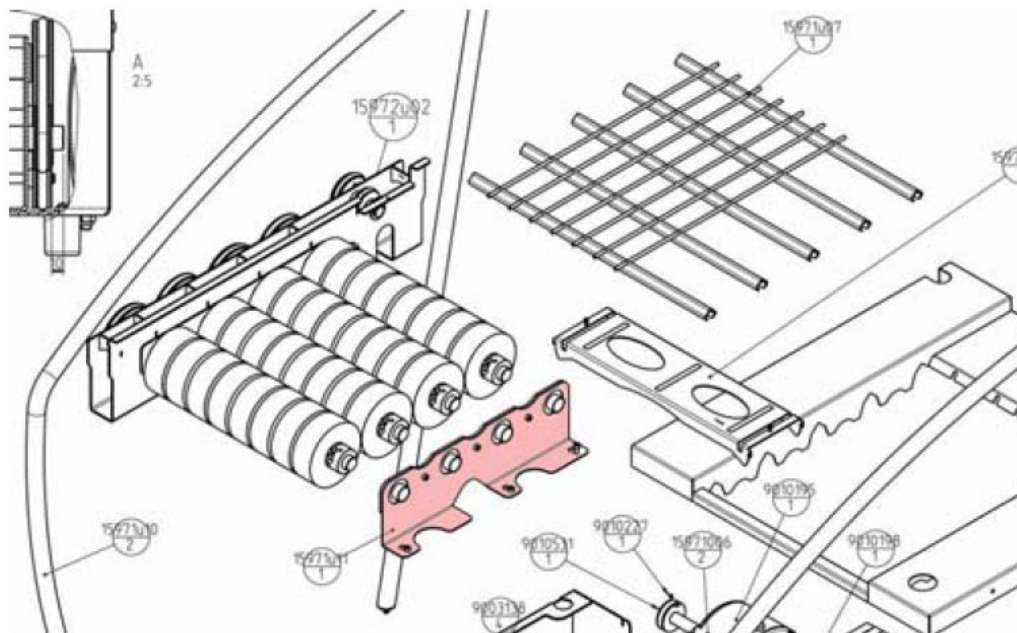
Unplug machine from main power supply!

Remove steel cover (red in picture 3) and loosen belt tensioner (picture 9). Note down the way the existing belt is located on the pulleys or take a picture; remove old belt and insert new one. Use belt tensioner to tighten the belt.

### ***Exchaning brushes:***

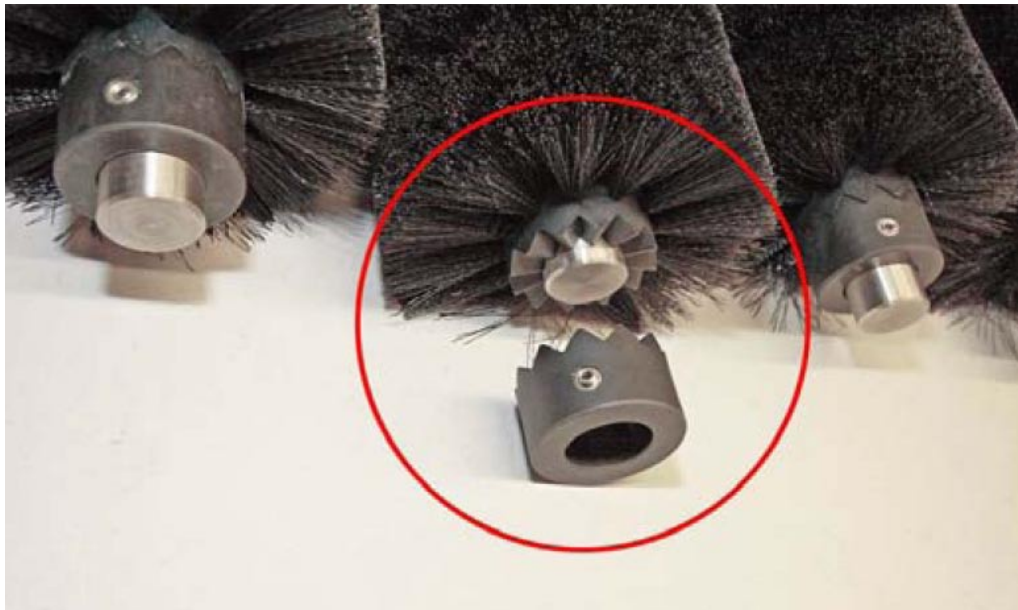
Unplug machine from main power supply!

Unscrew the 4 screws of the steel cover and remove it entirely(c.f. picture 3). Next loosen the 3 screws of the plain bearing holder slightly (picture 10) but do not remove them completely.



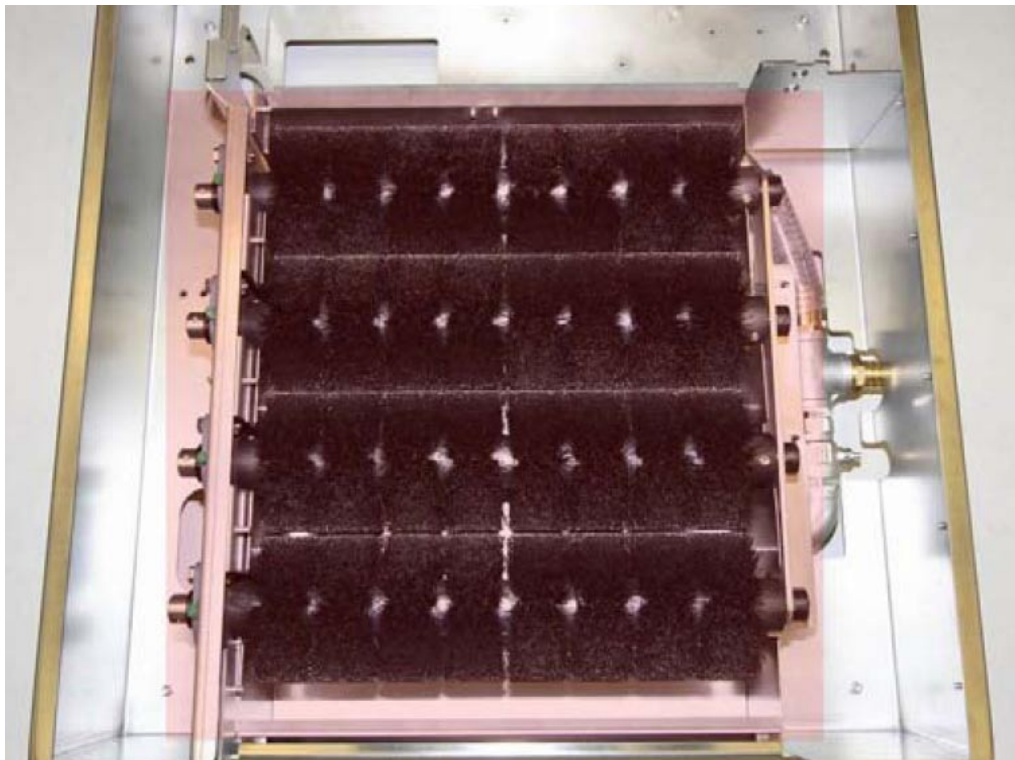
Picture 10

For (dry) models **DRY 400 + 450** you can now loosen the 2 grub screws at the brush fixing element (c.f. picture 11) and remove this head from the axle. The brushes can now be pulled off easily.



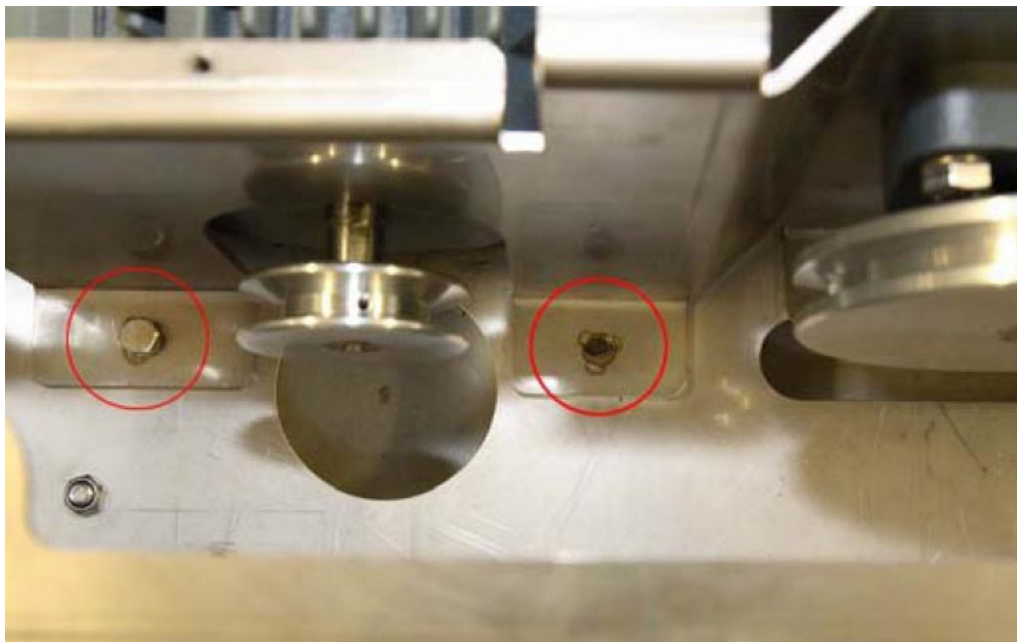
Picture 11

With **WET 500** the entire brush holder unit incl. axles (c.f. picture 12) will have to be removed because the liquid bin does not allow taking off the brushes sideways as described for the dry models **DRY 400 & 450**.



Picture 12

First remove the belt from the 4 pulleys, next detach and remove plain bearing holder as described before but additionally remove the 5 screws of the element shown in picture 13.



Picture 13

The entire brush unit can now be removed. Afterwards loosen the grub screws, take off fixing element and exchange brushes (c.f. picture 11).

---

***Spare parts:***

Please note down the machine number as well as date of production (c.f. label) and if possible let us know the article numbers for the spare parts you want to order.

***Guarantee:***

We warrant our products to be free of manufacturing and material faults. Warranty extends to 1 year months on electrical components and to 2 years on metal components, commencing in each case on the day of dispatch from the supplier's premises or depot.

Changes or modifications made by customers to our products without our prior consent thereto given in writing will render the warranty null and void.

Blue Level GmbH  
Säntisstrasse 17  
8280 Kreuzlingen  
Schweiz  
Tel: +41 (0)71 672 45 07  
Fax: +41 (0)672 44 53

