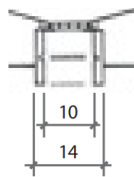
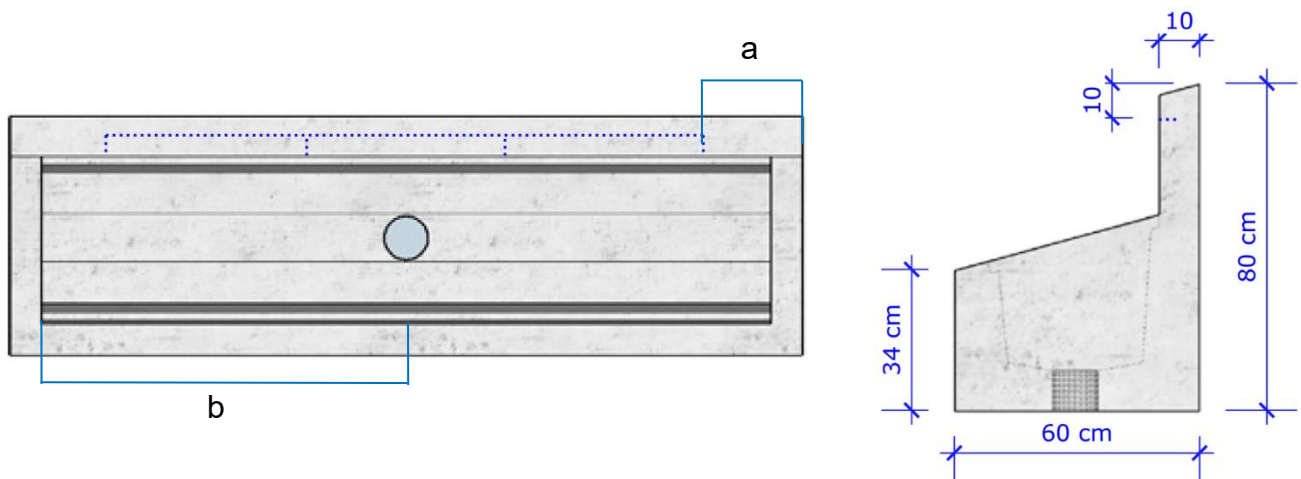


**Technical data for the frost-proof boot cleaner above ground back wall,
 2, 4 or 5 cleaning stations**

NW 100 well lining for
 PE and PP pipes



Type	Dimension						Weight kg / pcs
	L cm	B cm	H cm	a cm	b cm		
2 taps	140	60	80	40	62	600	
4 taps	200	60	80	25	92	900	
5 taps	260	60	80	30	122	1 200	



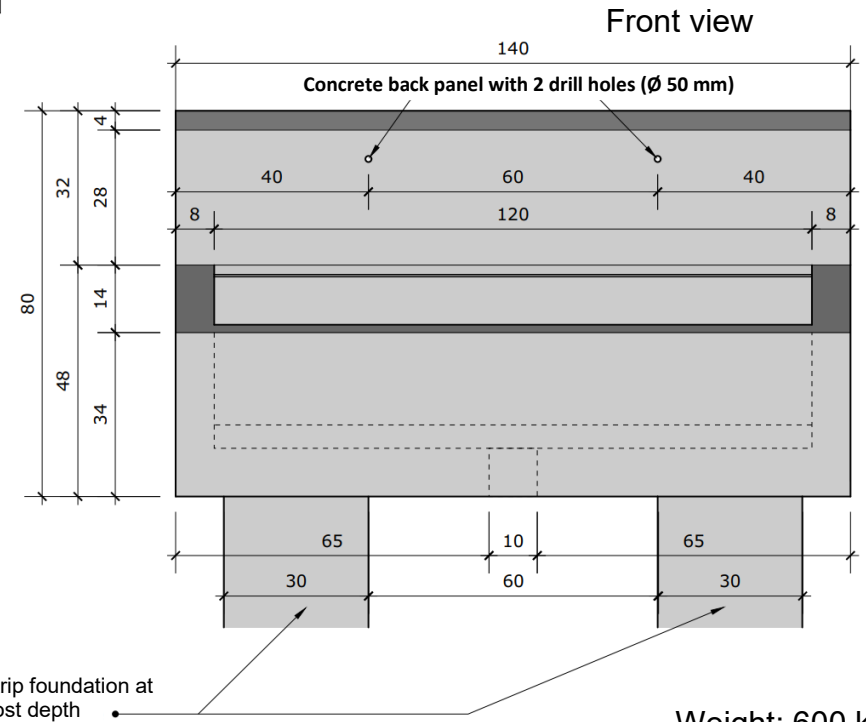
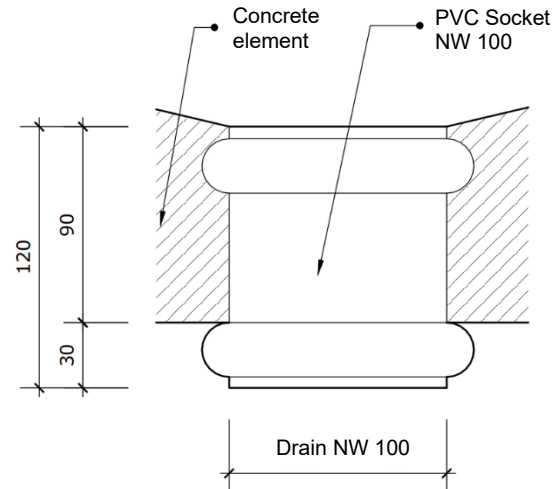
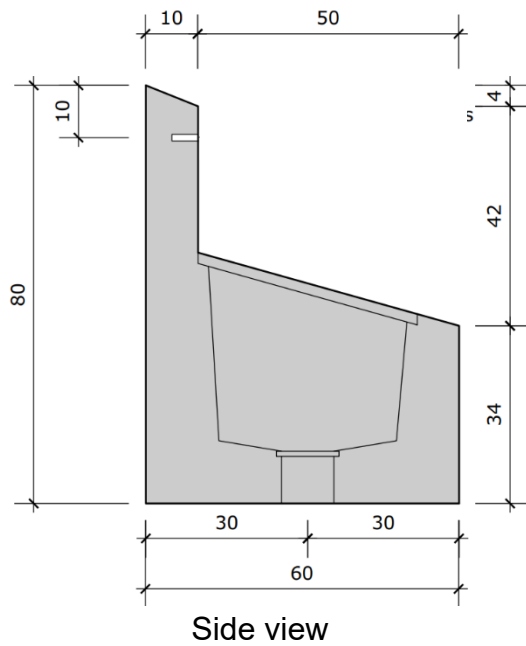
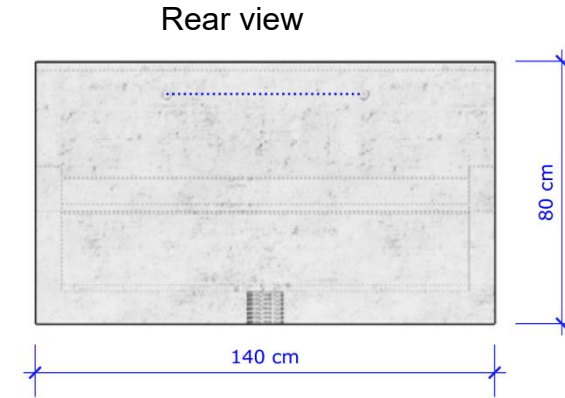
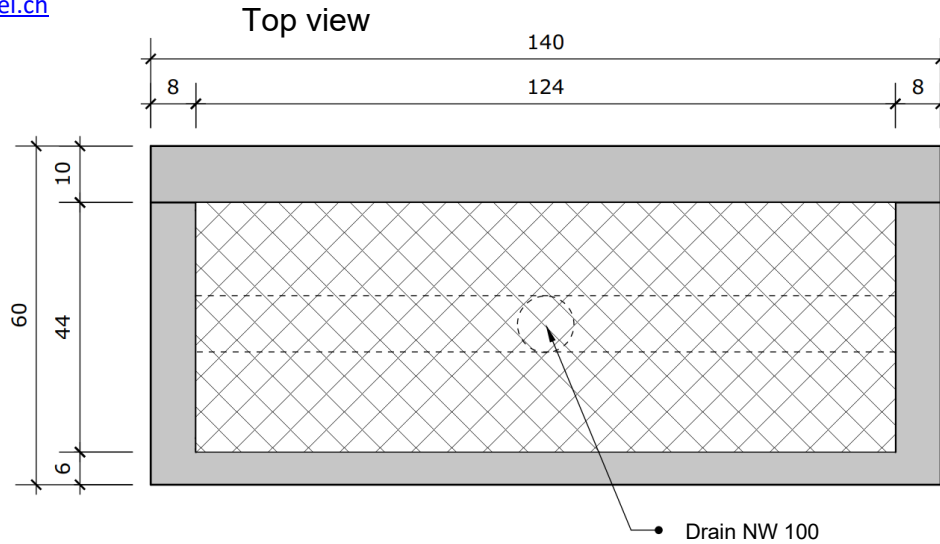
Notes:

- Concrete back panel with 2-5 drill holes (Ø 50 mm) for on-site frost-proof fittings.
- Faucets are not included.
- Prices do not include site preparation, installation, or transport. Installation must be carried out by a local plumber/construction company.
- Before installation, the foundation/support, water connection, and drain with sediment trap must be installed on-site.

Blue Level GmbH
Säntisstrasse 17
CH-8280 Kreuzlingen
Switzerland

eShop: www.schuhputzmaschine.ch
eMail: info@bluelevel.ch

Frost-proof boot cleaner above ground back wall,
2 cleaning stations
(SWAB-000201)



Weight: 600 kg

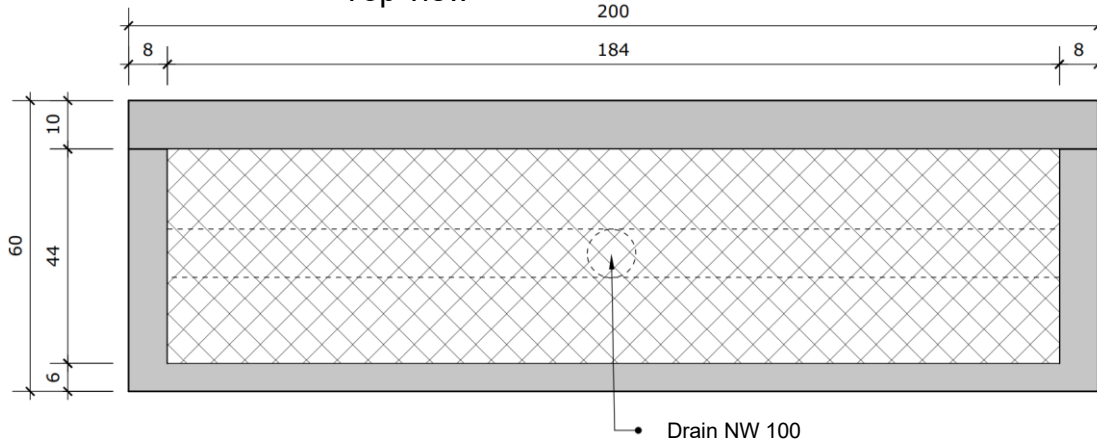
Blue Level GmbH
 Säntisstrasse 17
 CH-8280 Kreuzlingen
 Switzerland

eShop: www.schuhputzmaschine.ch
 eMail: info@bluelevel.ch

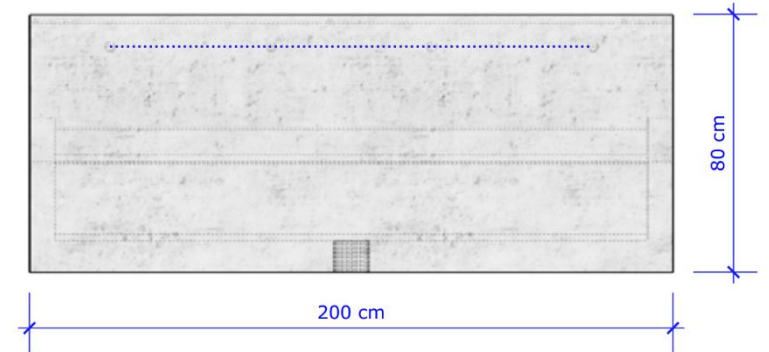
**Frost-proof boot cleaner above ground back wall,
 4 cleaning stations
 (SWAB-000202)**



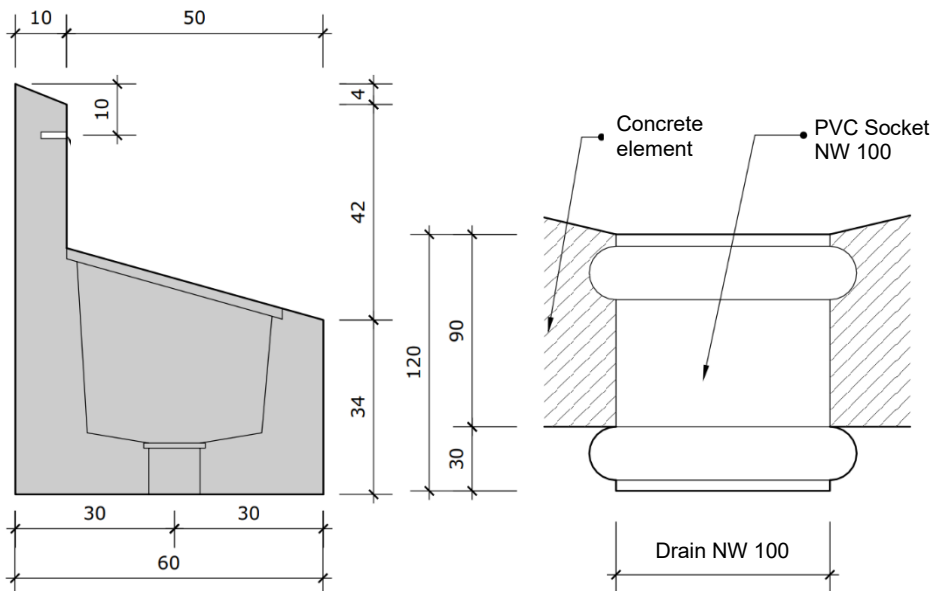
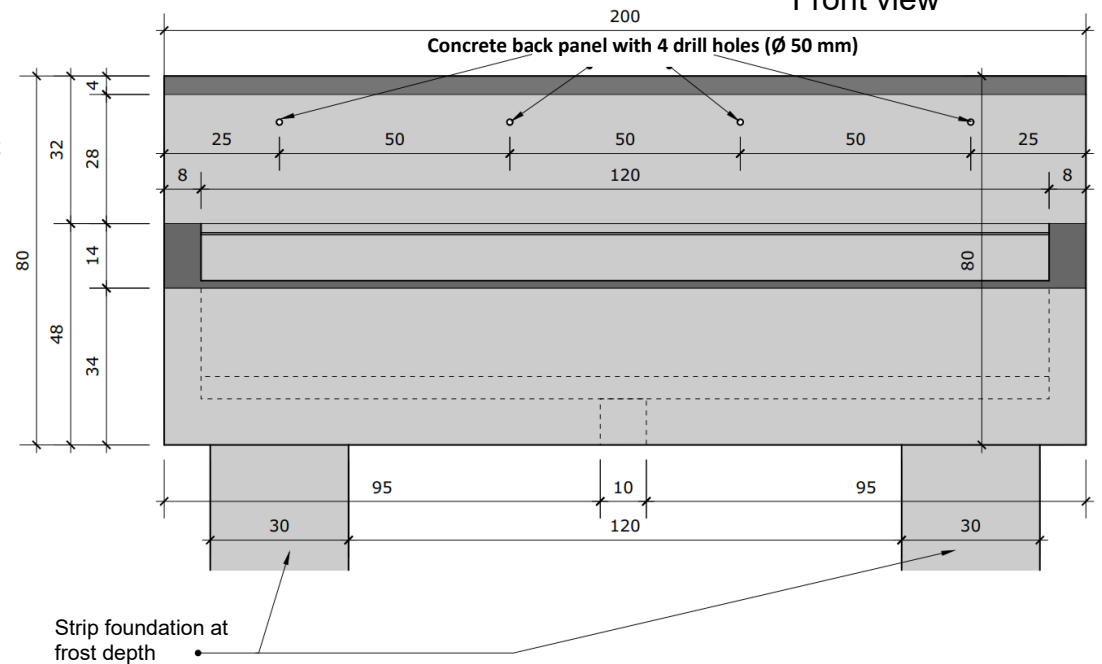
Top view



Rear view



Front view



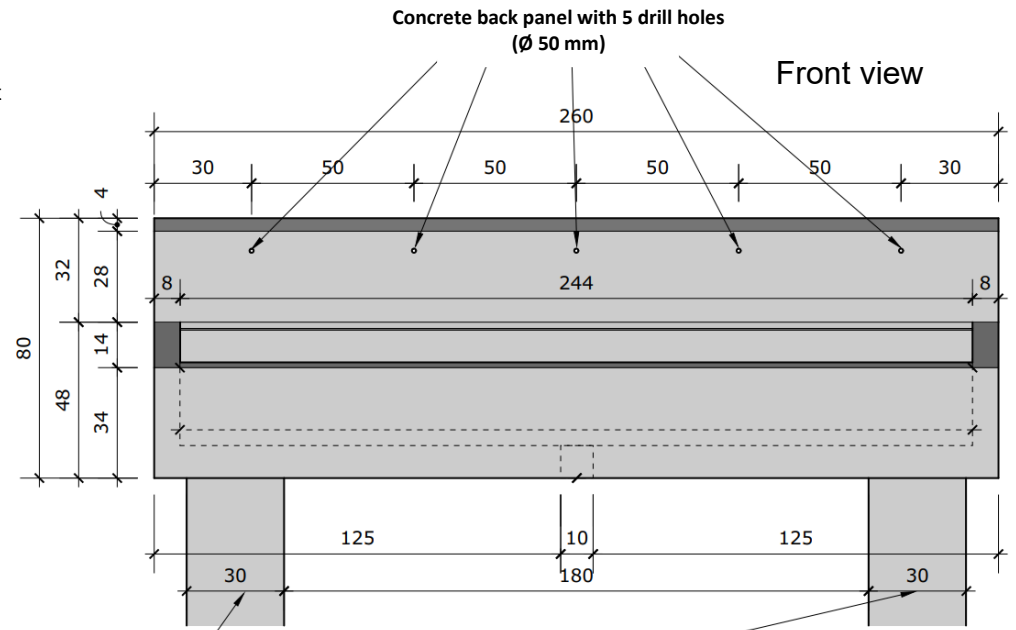
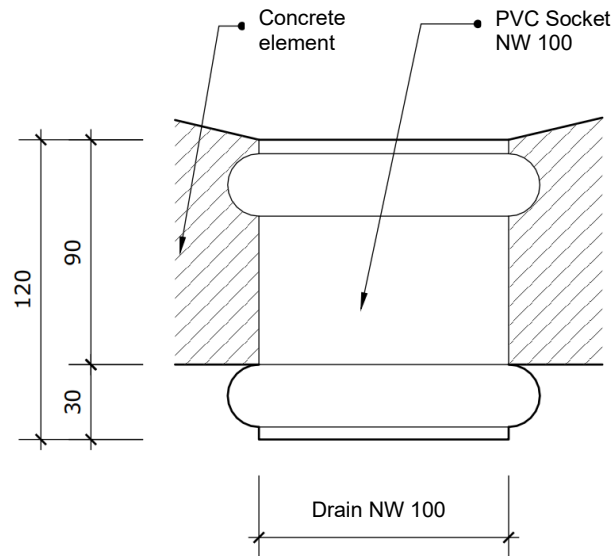
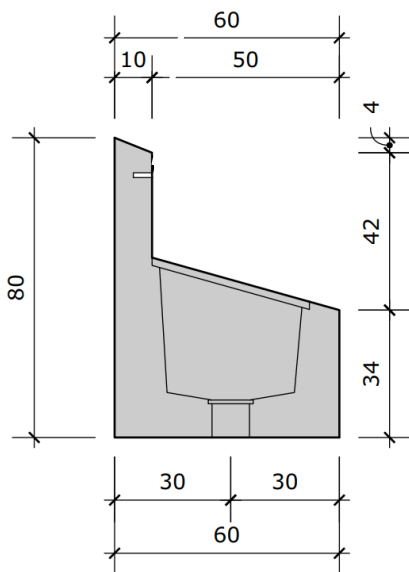
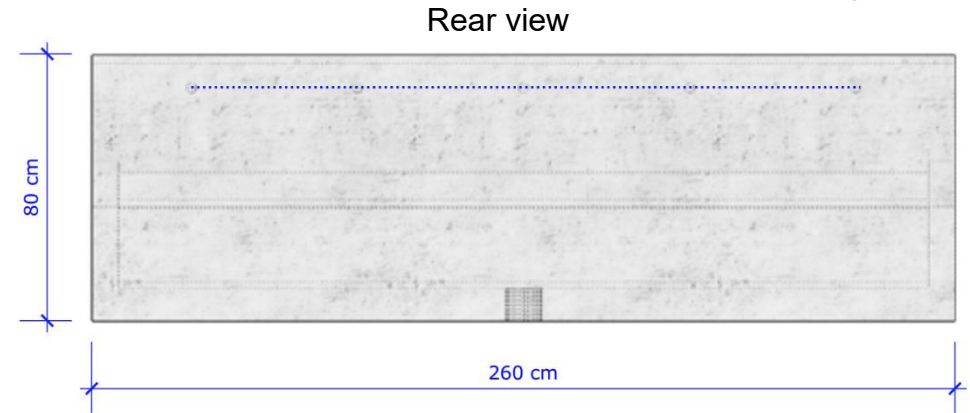
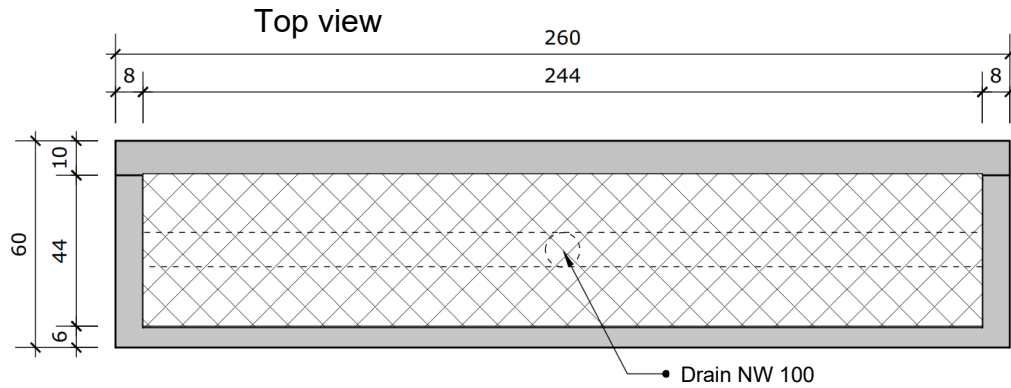
Side view

Weight: 900 kg

Blue Level GmbH
Säntisstrasse 17
CH-8280 Kreuzlingen
Switzerland

eShop: www.schuhputzmaschine.ch
eMail: info@bluelevel.ch

Frost-proof boot cleaner above ground back wall,
5 cleaning stations
(SWAB-000203)



Strip foundation at frost depth

Weight: 1200 kg