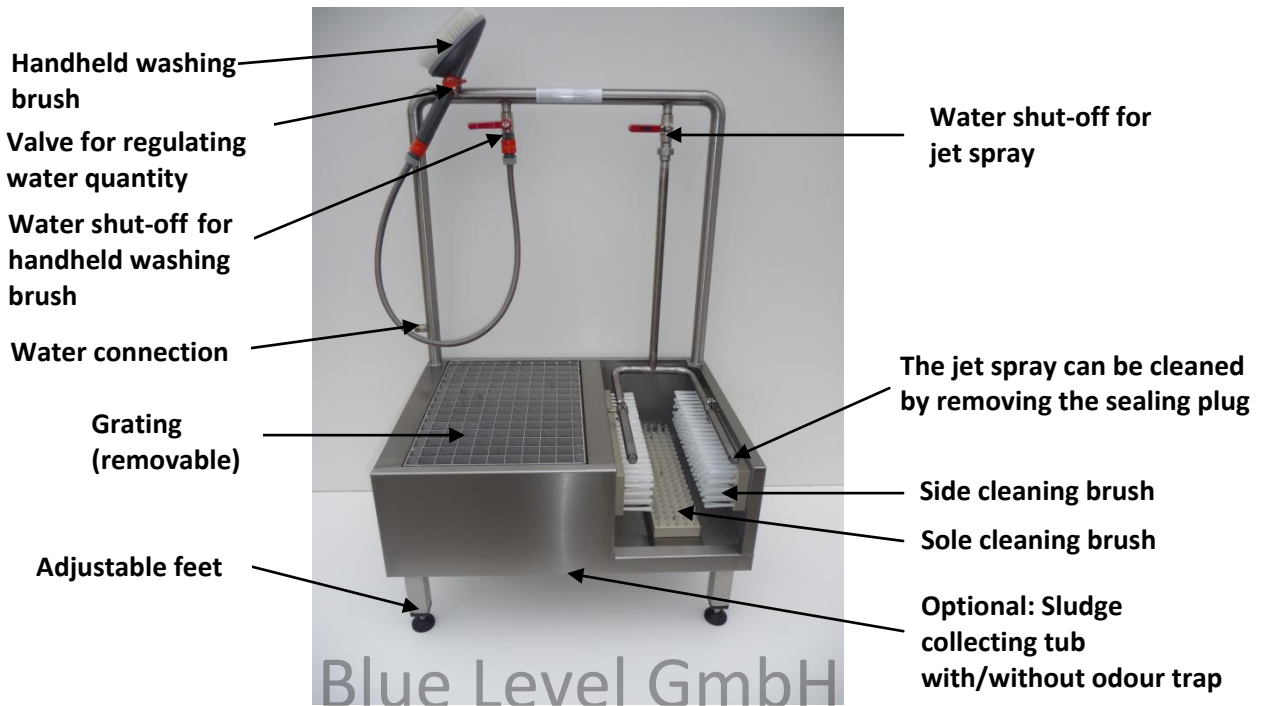


Technical datasheet for Boot Washer Stainless Steel Pro, for 1/ 2/ 3 stations

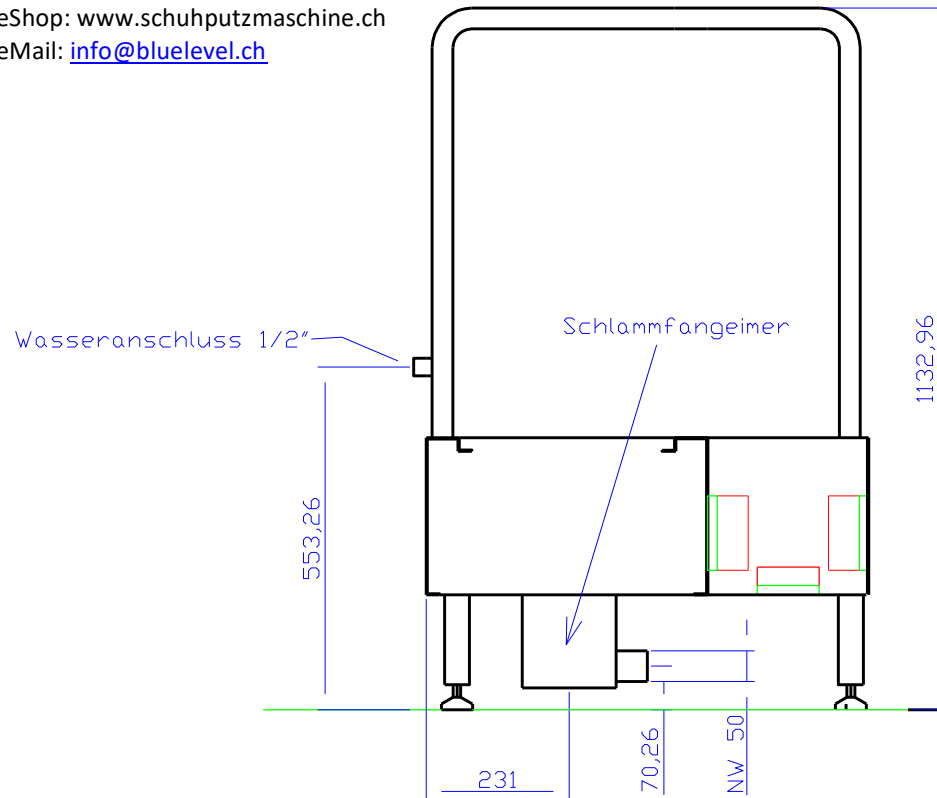


- ½" water connection for 1 station, ¾" for 2 or 3 cleaning stations
- Water temperature up to max. 40 °C
- Maximum water pressure 8 bar
- Water inflow can be shut off (on site), must be easy to reach (the inflow must be shut off if the boot washer will not be used for an extended period of time)
- The water connection must comply with the provisions of the relevant waterworks and be performed by an authorised specialist (delivery does not include aerator or system separator)
- Non-slip floor
- 4 adjustable feet to balance out uneven surfaces (the boot washer must be level)
- Comes with sludge collecting tub with/without odour trap (sludge collecting tub must be cleaned when necessary)
- Boot washer material: stainless steel 1.4301, brushes: nylon
- Outflow of NW 50
- Dimensions: width 750 mm, depth 550 mm, height 1,150 mm
- The boot washer must be protected from freezing
- Check the boot washer for leaks after installation!
- Please note: at temperatures below freezing point the drain could freeze and there is a risk of slipping on the washer!

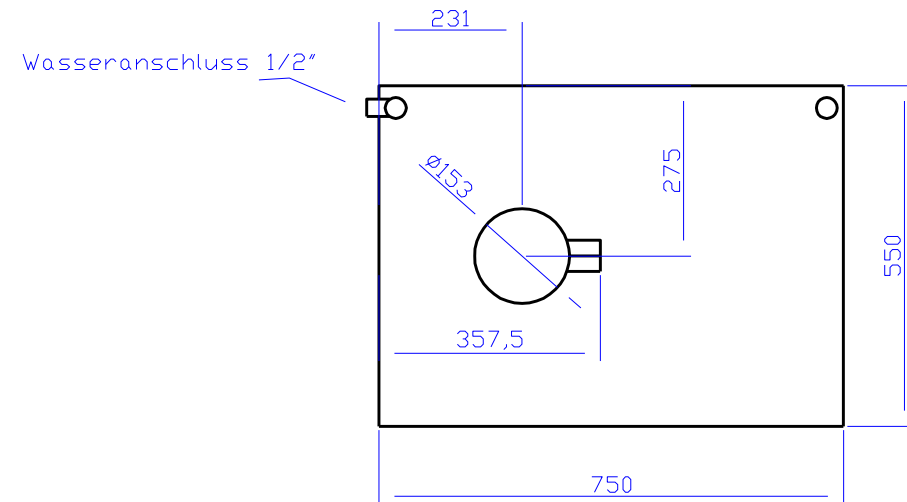
Blue Level GmbH
Säntisstrasse 17
CH-8280 Kreuzlingen
Switzerland

eShop: www.schuhputzmaschine.ch
eMail: info@bluelevel.ch

Stiefelwaschanlage Edelstahl-Profi, 1 Reinigungsplatz



ANSICHT VON VORNE



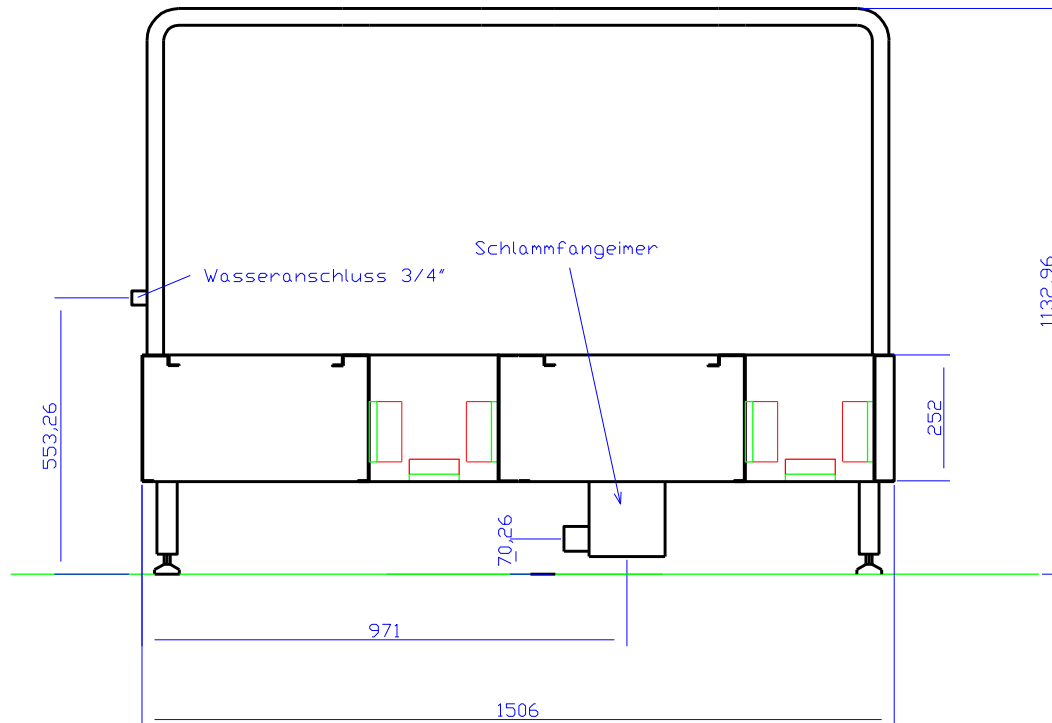
ANSICHT VON OBEN

1		1		1.4301		Blech 2mm
Stück	Benennung	Teil	Norm Nr. Zeichng-Nr	Werkstoff	Rohmaße- Modell Nr.	Bemerkung
Maßstab o.M	Edelstahl-Profi				Kunde	
Freimaß- toleranzen mittel			Datum 10.12.09		Zeichnung.Nr. 1	

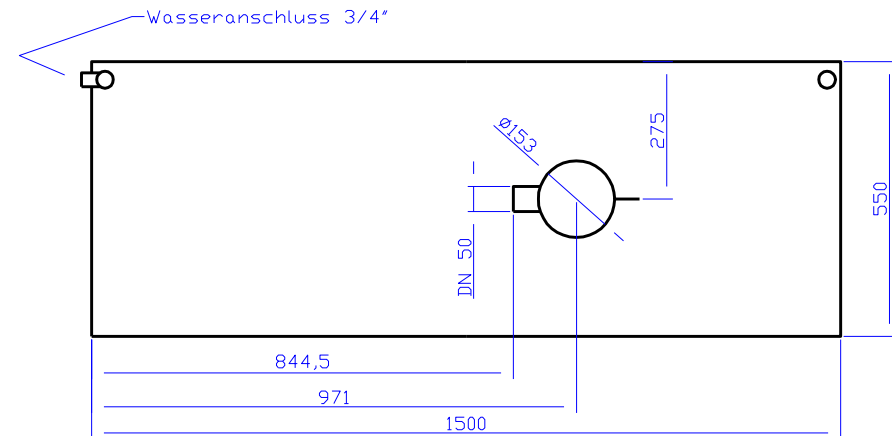
Blue Level GmbH
Säntisstrasse 17
CH-8280 Kreuzlingen
Switzerland

eShop: www.schuhputzmaschine.ch
eMail: info@bluelevel.ch

Stiefelwaschanlage Edelstahl-Profi, 2 Reinigungsplätze



ANSICHT VON VORNE



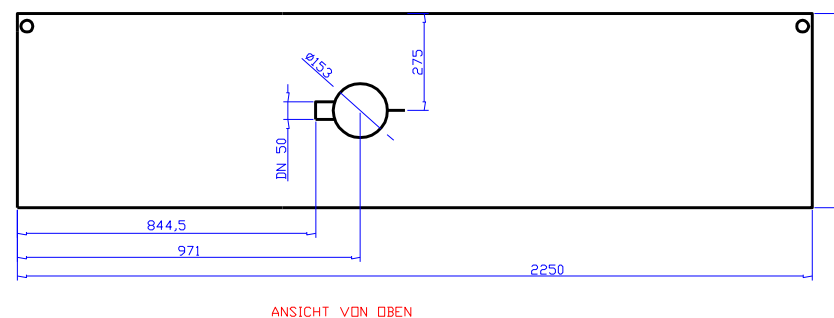
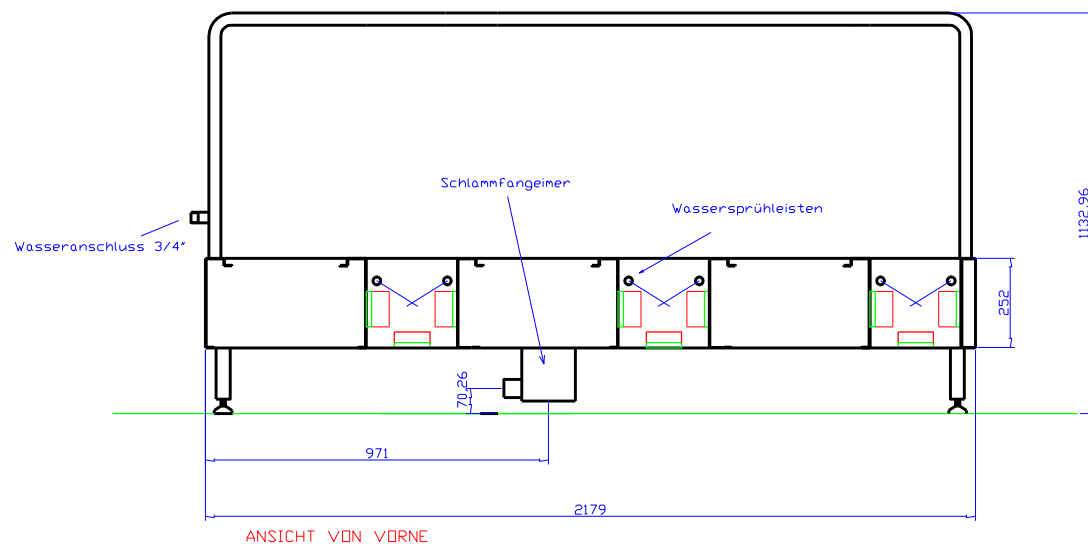
ANSICHT VON OBEN

1		1		1.4301		Blech 2mm
Stück	Benennung	Teil	Norm Nr. Zeichng-Nr	Werkstoff	Rohmaße- Modell Nr.	Bemerkung
Maßstab o.M	Edelstahl-Profi				Kunde	
Freimaß- toleranzen mittel			Datum 10.12.09		Zeichnung.Nr. 1	

Blue Level GmbH
Säntisstrasse 17
CH-8280 Kreuzlingen
Switzerland

eShop: www.schuhputzmaschine.ch
eMail: info@bluelevel.ch

Stiefelwaschanlage Edelstahl-Profi, 3 Reinigungsplätze



1		1		1.4301		Blech 2mm
Stück	Benennung	Teil	Norm Nr. Zeichng-Nr	Werkstoff	Rohmaße- Modell Nr.	Bemerkung
Maßstab o.M	Edelstahl-Profi				Kunde	
Freimaß- toleranzen mittel			Datum 01.12.2012		Zeichnung.Nr. 1	